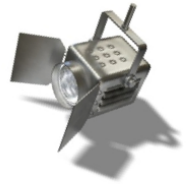




# Spain Spotlight



WINTER ISSUE - 2012

Highlighting the activities & needs of SEND International - Spain

## The Pull of Two Worlds!

Photo: Cristo Vive Hoy prays for the Diaz Family



It's 9pm and we tuck the boys into bed, but an hour later our 6 year-old Jacob is in our room curling up beside us in tears. "When we go to America do I really need to leave all my friends?" He was less than 3 when he came to Spain, so he barely remembers anything or anyone other than his grandparents who visited here.

Tickets are purchased for December 22 till June of 2012 and we are needy of your

prayers as we all feel the pull of two worlds. We are excited to be coming home, but also feel anxious.

Meanwhile, we try to stay plugged in here by both ministering and also preparing others for ministries from which we will be stepping away. At the same time we need to pack, call churches and others back home, etc. PRAY we depend on the Lord for this big transition.

Sometimes as a missionary "home" is a confusing concept. At times it is hard to tell if we coming or leaving. A prayer we have for ourselves and our boys is to remember the whole world is God's and He goes with us wherever we are. Furthermore as dear as this world is, our home is really still to come. As such, when we feel the pull of two worlds we are in a good place.

*But whatever was to my profit I now consider loss for the sake of Christ. What is more, I consider everything a loss compared to the surpassing greatness of knowing Christ Jesus my Lord,*

Philippians 3:7-8

By Steve & Angelica Diaz

### METAS Project Funding Completed

For many years, missionaries in Spain have faced a major hurdle—Spaniards see evangelical churches as cults. So how do you start churches in such an environment? You build trust in the community.

*Continue next page...*

### MISSION

To glorify Jesus Christ in Spain through the establishing of indigenous, reproducing churches.

### 5-Year Goals

1. Guadalajara and Sigüenza projects fully funded.
2. Five new units in Sigüenza & Guadalajara.
3. Ten new units heading to the Toledo Province.
4. Two full-time MK educators.
5. Four active Youth Ministries.
6. METAS Guadalajara: three social ministries established as part of the church planting work.



Photo: METAS Building in Guadalajara

So when SEND missionaries entered Guadalajara, Spain, they looked for ways to build that trust. Eventually the idea for METAS was born.

METAS Association is a non-profit NGO created to build bridges from the church into the community. In Spanish METAS means goals and the goal of the organization is to establish community-based outreach ministries that will meet essential needs and demonstrate Christ-like love. Current activities include English classes, German classes, guitar lessons, job skills training, international reading room and social assistance.

METAS and the Guadalajara Church Plant work closely together. METAS builds bridges of opportunity to share the gospel, drawing people into the Guadalajara Church.

Several years ago, the organization leased a store front in a great location to carry out its growing ministry and began a campaign to raise the \$500,000 needed to purchase the building.



### SEND CHRISTMAS PARTY

Through a matching gift and many generous donations over several years, God supplied the money. On Friday, December 16, paperwork was submitted to register the purchase of the building with the government. And that Sunday the building was dedicated at a ribbon cutting ceremony.

Praise the Lord for His faithfulness in completing this project. And thank you to everyone who prayed and gave to METAS. Please continue to pray that many lives will be reached through this community outreach.

By Craig Nordgren



Bekah Davis as "Larry the Cucumber" during one of SEND's festive Annual Christmas Party, which the short-termers organized this year.

### FIELD IDENTIFIED NEEDS

#### Immediate Openings

- Church planting teammates needed for the team in Sigüenza, using skills like discipling, friendship evangelism, youth ministry, music, sports, English, Bible studies, etc.
- Youth leaders on various church planting teams.
- Teachers at the Missionary Kids' School (Evangelical Christian Academy) near Madrid.

#### Other Ministry Openings under Development

- Additional pioneer church planting teams are being formed in Toledo Province and the province of Asturias to start churches in communities that have never had any evangelical Christian witness.
- METAS Community Outreach Ministry. Future needs include:  
ESL Teachers, Family and Marriage Counselor

## Upcoming Events

- Jan 21 - SEND SPAIN Day of Prayer
- Feb 2-3 - Team Leader Mini-Retreat
- Mar 26-30 - European Women's Retreat in Germany
- June 12 - Love Europe 2012 short-term missions begins



[www.sendspain.org](http://www.sendspain.org)

**SEND Internacional de España**  
Contact Craig Nordgren

C/ Lumbreras, 8  
28032 Madrid  
(+34) 949-277-650  
sendspain@gmail.com